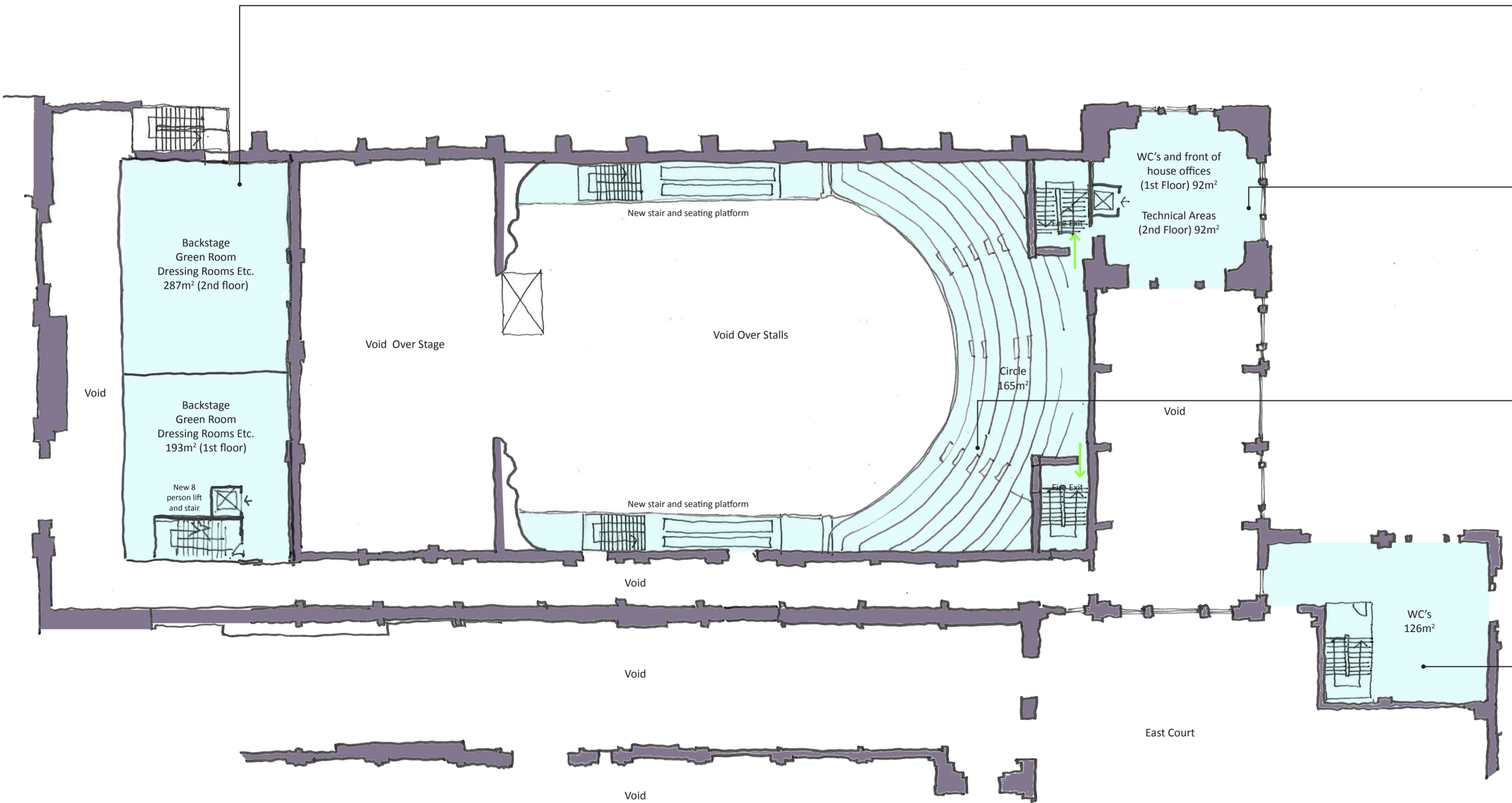


Key

- - - - Demolitions
- Existing fabric
- New Walls
- Area of upgrade



New accommodation behind stage

Floor	Carpet
Walls	Blockwork, skimmed and decorated
Ceiling	Plasterboard skimmed and painted
Doors	Doors to be added where required for fire protection
Lighting	Office standard lighting throughout

Tower

Floor	Carpet / Ceramic tile in WC's
Walls	Blockwork, skimmed and decorated
Ceiling	Plasterboard skimmed and painted
Doors	Doors to be added where required for fire protection
Lighting	Office standard lighting throughout

Stalls

Floor	Carpet
Walls	Remain as existing Acoustic panels to be added TBC by acoustic engineer
Ceiling	Remain as existing Acoustic panels to be added TBC by acoustic engineer
Doors	Doors to be added where required for fire protection
FF&E	New removable theatre seating to be added to theatre consultants spec

WC

Floor	Ceramic tile
Walls	Remove redundant services, make good, repaint white
Ceiling	Remove redundant services, make good, repaint white
Windows / Doors	Demolish blocked up original openings add new windows
FF&E	All new fixtures and fittings required. All new services required

TO BE READ IN CONJUNCTION WITH AMPC DRAWINGS



First/Second Floor
 Scale: 1:200 @ A2
 Theatre - Masterplan Positive Scheme Study
Alexandra Palace Theatre & BBC Studios HLF Bid

SK AXP1-005
 Rev A
 31st August 2012

FARRELLS